

Installation Instructions

Bead Chain Clutch FlexShades with Small Hardware by Draper

Patent pending.

Warning

- ① Inspect all boxes to make sure you have received the proper shades and parts.
- ② Open cartons lengthwise.
- ③ If shades are to be installed in areas accessible to young children, be certain to use cord tension device and heed warning at right.
- ④ All brackets, fascia, headboxes, pockets, wall clips, and other hardware must be installed level. Shades must be level and square.
- ⑤ **Please read the following installation guidelines thoroughly and follow them carefully. Failure to do so may cause product to fall or otherwise fail, and invalidates warranty.**

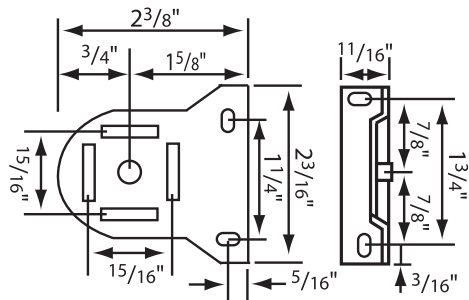
Warning For the Safety of Young Children

Be certain to install cord tension device to wall, jamb or sill using appropriate fasteners. Proper installation of cord tension device keeps loops from being easily accessible. If bead chain is not secured with cord tension device, young children can STRANGLE in bead chain loops. In any case, **clutch-operated shades should not be installed near cribs or playpens.**

Bead Chain Clutch—Small Brackets

- ① Mark wall, jamb or ceiling for placement of mounting brackets.
- ⚠ **Caution: Before mounting shades, verify measurements on the card provided with the shade, and ensure the brackets are installed at the correct width.**
- ② Drill small starter hole (if necessary) in mounting surface.
- ③ Mount brackets using appropriate fasteners for surface (see Fig. 1 for bracket dimensions). **The installer is responsible for selecting mounting hardware appropriate for site conditions.**

Small Bead Chain Bracket Dimensions



Universal Bracket
Figure 1

- ④ Place spring-loaded pin into bracket, depress pin by pushing shade roller toward bracket, slip notches on operator end into other bracket, then press down to lock in place (see Fig. 2).

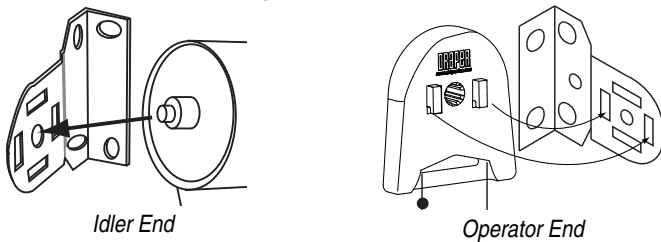
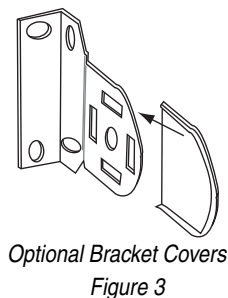


Figure 2

- ⑤ Install optional bracket covers (if provided) (see Fig. 3)



Optional Bracket Covers
Figure 3

Bead Chain Clutch—Small Endcaps

- ① Mark wall, jamb or ceiling for placement of mounting endcaps.
- ② Drill small starter hole (if necessary) in mounting surface.
- ③ For endcaps, snap end covers into place (see Fig. 4).

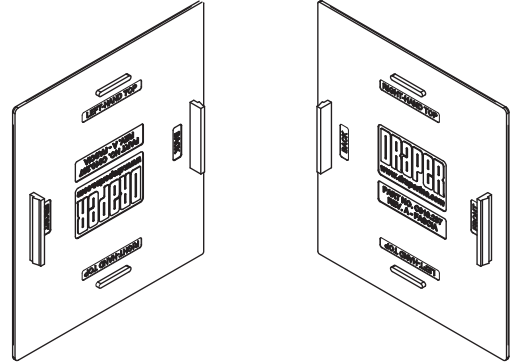


Figure 4

- ④ Mount endcaps using appropriate fasteners for surface (see Fig. 5 for bracket dimensions). **The installer is responsible for selecting mounting hardware appropriate for site conditions.**

⚠ **Caution: Before mounting shades, verify measurements on the card provided with the shade, and ensure the endcaps are installed at the correct width.**

Small Bead Chain Endcap Dimensions

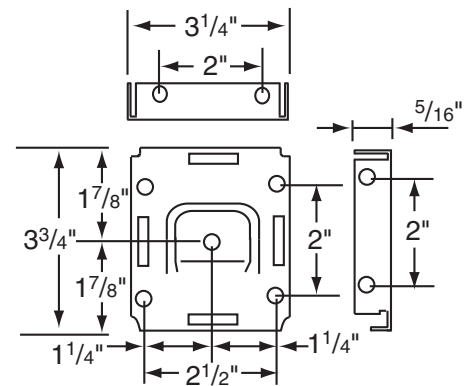


Figure 5

- ⑤ Place spring-loaded pin into idler endcap, depress pin by pushing shade roller toward endcap, slip notches on operator end into other endcap, then press down to lock in place (see Fig. 6).

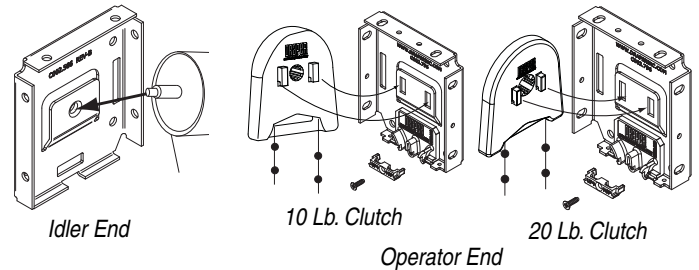


Figure 6

- ⑥ Properly route the bead chain through the chain guide, then attach the chain guide cover to the chain guide using the provided screw (see Fig. 5 on page 1).

⚠ **CAUTION: Be sure to lock chain guide cover to chain guide with provided screw.**

Continued on reverse side

If you encounter any difficulties installing or servicing your Bead Chain Clutch FlexShades, call your dealer or Draper, Inc. in Spiceland, Indiana, 765-987-7999, or fax 765-987-7142.

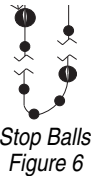
DRAPER®

411 S. Pearl St., Spiceland, IN 47385 USA ■ 765-987-7999
www.draperinc.com ■ fax 765-987-7142
Copyright © 2011 Draper Inc. Form BeadChainFlexShades_Inst11 Printed in U.S.A.

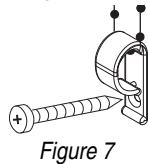
⑦ Set upper and lower travel limits by installing stop balls to bead chain (crimp closed using pliers) (see Fig. 6).

⚠ CAUTION: Do not allow the shade roller to become exposed by running the shade fabric too far down. Be sure to use the stop balls provided in hardware packet by Draper to set the up and down travel limits. Stop balls by others may be too small, and become lodged in the clutch mechanism.

Please Note: If shade fabric is uneven, see "Field Adjustments" below.



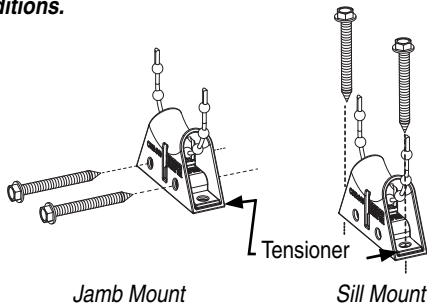
⑧ Cord tension device comes pre-attached to bead chain (see Fig. 7), and must be attached to wall, jamb or sill so that the bead chain is held taut enough that children cannot pull it away from the wall or fit their head into the loop. **See safety note on page 1.**



Optional Spring-Loaded Cord Tension Device

⑨ Cord tension device comes installed on bead chain (see Fig. 8). Install cord tension device to wall, jamb or sill. To install, pull tensioner down so that the bead chain is held taut and use the mounting hardware to keep it taut. The bead chain should be taut enough so it will move smoothly through the device. If there is not enough tension, the device will not allow the bead chain to pass through and operate the shade. This device is designed so that children cannot pull the bead chain away from the wall or fit their head into the loop. **See safety note on page 1.**

The installer is responsible for selecting mounting hardware appropriate for site conditions.



Fascia

① Snap end covers onto endcaps.
② Install endcaps and shade (see "Bead Chain—Small Endcaps" section).
③ Place groove along top of fascia over endcaps, and snap into place (see Fig. 9). **Fascia is not fully seated until it clicks into place on both ends. Once in place, check for secure fit. If not secure, secure with appropriate fastener (not included).**

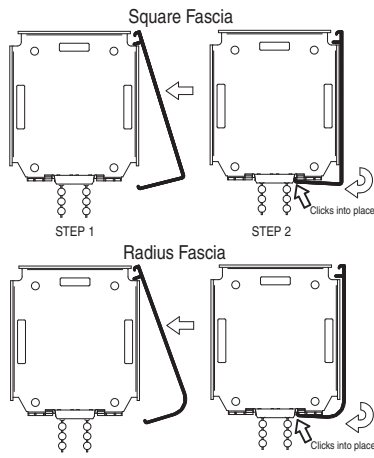


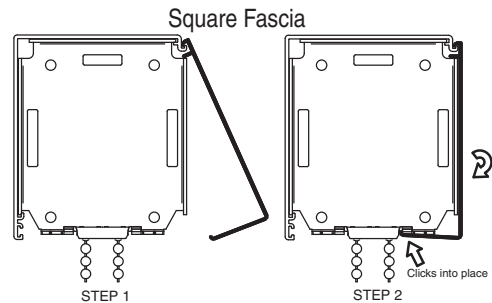
Figure 9

Headbox

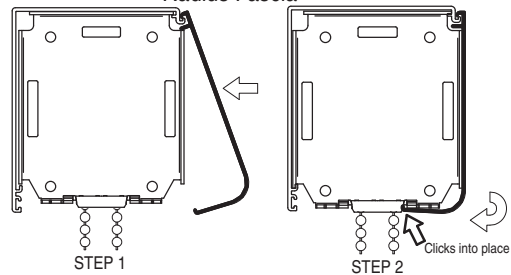
⚠ Caution: Before mounting shades, verify measurements on the card provided with the shade, and ensure the unit is installed at the correct width.

- ① Snap endcap covers onto endcaps.
- ② Place endcaps into back/top portion of wall/ceiling headbox or into pocket extrusion of pocket headbox. Using pre-drilled holes in endcaps, mark the headbox for drilling.
- ③ Drill holes in back or top, depending on whether you will be mounting the headbox to the wall, ceiling or pocket.
- ④ Attach endcaps and wall/ceiling headbox back/top or pocket headbox extrusion to wall, ceiling or pocket using mounting hardware appropriate for site conditions. **The installer is responsible for selecting mounting hardware appropriate for site conditions.**
- ⑤ Install shade (see "Bead Chain Clutch—Small Endcaps" section above).
- ⑥ Attach headbox fascia or closure (see Fig. 10). **Note on fascia style headbox: Surface Headbox fascia is not fully seated until it clicks into place on both ends. Once in place, check for secure fit. If not secure, secure with appropriate fastener (not included).**

Surface Headbox



Radius Fascia



Pocket Headbox

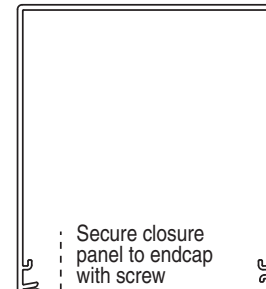


Figure 10

Field Adjustments

Each Draper Solar Control Shade is tested to ensure proper operation. Even with this testing, some field adjustments may be needed for telescoping. If the shade is telescoping, place a piece of high quality gaffer tape about 1" wide on the exposed roller (where the fabric will cover it) on the side that you want the fabric drawn toward. For example: if the fabric is tracking to the left, place the tape on the right side.

Cleaning and Maintenance

Window covering products manufactured by Draper, when properly installed, should require no operational maintenance or lubrication.

Most of Draper's standard fabrics may be cleaned at the window by vacuuming with a soft brush attachment. They may also be cleaned by using a sponge or soft cloth and mild solution of warm soapy water. A dishwashing liquid, such as Ivory liquid, is recommended. A clean dry cloth is recommended for the metal finish. **Exceptions are Flocké and Phifer SW7000 fabrics, which must be cleaned with a dry art sponge.**